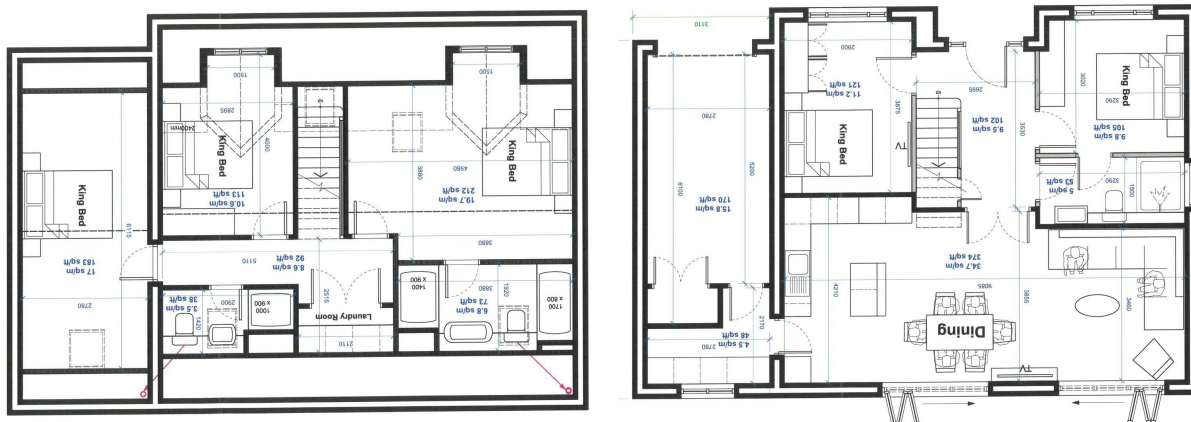




## Plot 6 Christopher Rise (No10 Clos William), Pontlliw, Swansea, SA4 9EN

£440,000

- OFF-PLAN RESERVATION NOW AVAILABLE
- GARAGE
- EPC B
- DIFFERING STYLES AVAILABLE
- OUTSTANDING QUALITY
- VERSATILE ACCOMMODATION OVER TWO LEVELS
- SOUGHT-AFTER LOCATION



## Description

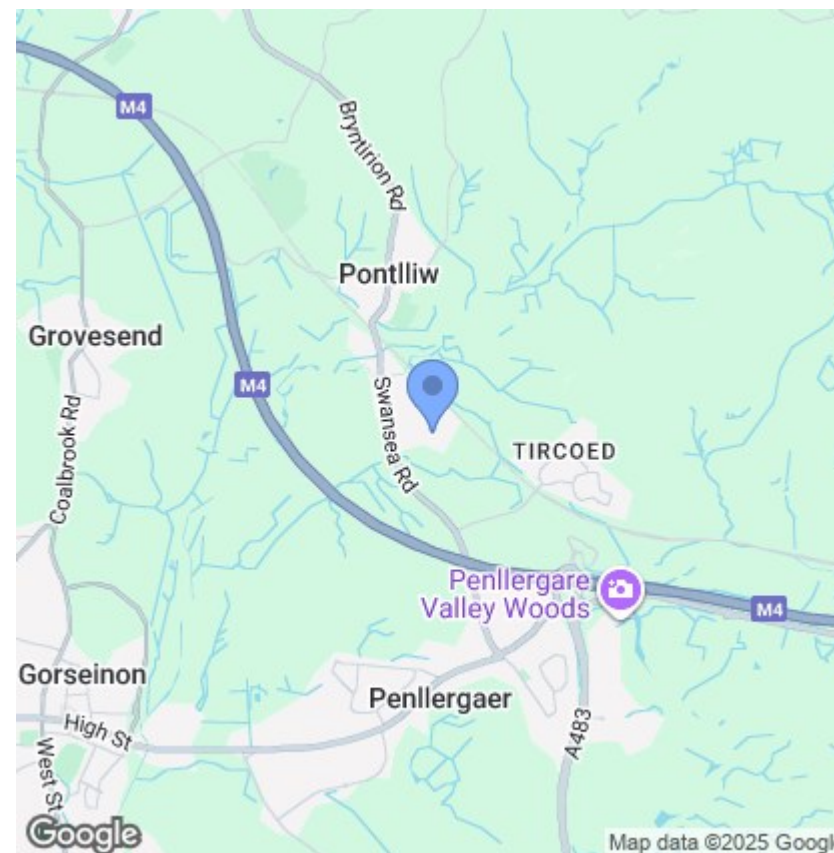
A limited selection of detached properties of varying styles on this sought-after development are ready for reservation.

Enquire within.

PRICES FROM £395,000

### ADDITIONAL INFORMATION

The Vendor advises a Japanese Knotweed eradication programme is in place.



## Directions

POSTCODE FOR SATNAV: SA4 9EN

## Viewings

Viewings by arrangement only.

Call 01792 653100 to make an appointment.